

Web-Based Monitor Center User Manual

Step I. Obtain IMEI Number.

Turn on the gps tracker and send "imei123456" in SMS ^[1] to the SIM card in the tracker. (123456 is the default password, if you have changed, using the new 6-digit password instead of 123456), you will receive a 15-digit IMEI number.

Step II. Configure APN Settings.

2.1. APN is the abbreviation of access point name which varies with the GSM Network Operator in different countries. In order to know your SIM Card's APN, please consult the local GSM Network Operator.

2.2. After getting the correct APN, send "apn123456+space+APN of local GSM Network operator" in SMS ^[1] to the tracker. If the configurations succeed, gps tracker will reply "APN ok".

2.3. If the GPRS cannot connect normally by APN of your local GSM Network Operator, you can configure by China's APN, please configure as following:

Send "apn123456 cmnet" in SMS ^[1] to the gps tracker, if successful, the gps tracker will reply "APN ok". China's GPRS connection doesn't require the user name and password.

Note: 123456 is the password, cmnet is the APN of GSM Network Operator in China.

Step III. Configure GPRS login username and password.

In most of the countries, the login user name and password can be ignored, this configuration can be skipped. If the local GSM Network needs the user name and password, please configure as following:

Send SMS ^[1] format as "up+123456+spaces+user+space+password". If successful, the gps tracker will reply "user, password ok!"

For example, send "up123456 jonnes 666666" in SMS ^[1] to the gps tracker. If successful, the gps tracker will reply "user, password ok!"

Note: 123456 is the tracker's password, Jonnes is the GPRS user name, 666666 is the GPRS password.

Step IV. Configure the IP address and the Port.

Send SMS ^[1] format as "adminip+password+space+Ip address+space+Port". The IP and Port of our web-based monitor center software are unique, all the users please configure with our IP and Port. The IP is: 202.105.135.50. Port: 9000. Please configure as following:

Send "adminip123456 202.105.135.50 9000" in SMS ^[1], if successful, the gps tracker will reply "adminip ok".

Step V. Register User ID and password.

Open website www.gpstrackerxy.com; click "Register", set up a user ID and password and then click "save". Please do keep the user ID and password in mind.



Step VI. Add IMEI Number.

Login the system with the user ID and password as you registered. , add IMEI number in the "terminal management"

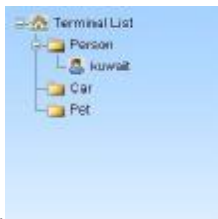
[1] Short Message Service (SMS) in Text Mode



menu.



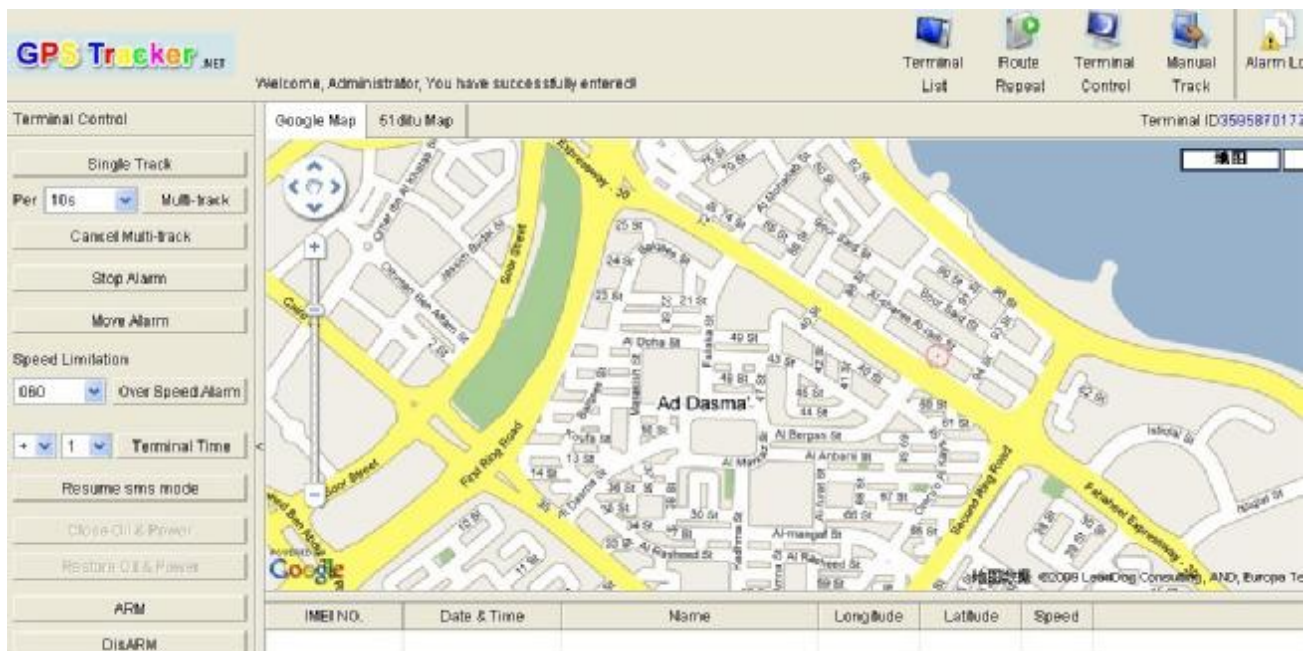
Step VII Control command operate



In the terminal List, click the terminal device (gps tracker) you added before, and then click the "terminal



control" menu to operate and manage your terminal device (gps tracker).



ZY INTERNATIONAL LIMITED

Website: <http://www.zhyichina.com>

MSN: sales@zhyichina.com

E-MAIL: info@zhyichina.com

[1] Short Message Service (SMS) in Text Mode